

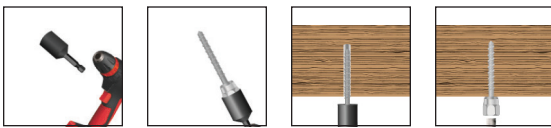
WOOD & STEEL INSTALLATION

1. Install appropriate Sammy nut driver (as shown on box label) in a 3/8" or 1/2" portable drill and insert the anchor into the nut driver.
2. Position drill perpendicular to the structural member and begin drilling **(DO NOT USE IMPACT OR HAMMER MODE)***.
3. When the nut driver spins freely on the cap of the screw, stop drilling and remove. Installation is now complete.
 - *DSTR and SWDR models add retainer nut and hand tighten (torque to 20 in-lbs max)*

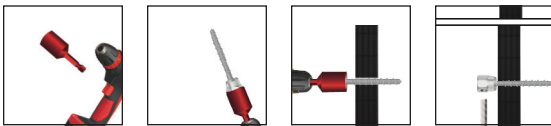
*For Sammys for Steel, use drill speeds as shown below:

SAMMYS FOR STEEL	SUGGESTED DRILL SPEED (RPM)
DSTR1-1/2, TEK 50, TEK 5.0, SDWR 1-1/2, SH-TEK 50	0 - 1800
All Other SAMMYS for Steel	0 - 2500

VERTICAL INSTALLATION



HORIZONTAL INSTALLATION



CONCRETE INSTALLATION

1. Using included 1/4" diameter carbide tip drill bit, predrill the concrete member to a depth of 2", with a hammer drill or rotary hammer set on hammer mode.
 - *For faster concrete installation see available concrete installation kit (8122910)*
2. Install appropriate Sammy nut driver (as shown on box label) in a 3/8" or 1/2" portable drill and insert the anchor into the nut driver.
3. Position drill perpendicular to the structural member and begin drilling **(DO NOT USE IMPACT OR HAMMER MODE)**.
4. When the nut driver spins freely on the cap of the screw, stop drilling and remove. Installation is now complete.

VERTICAL INSTALLATION



HORIZONTAL INSTALLATION



Note: SAMMYS nut drivers have a unique spin off feature which provides a fast and safe installation each time. When the face of the driver comes in contact with the material you are installing into, continue drilling until nut driver spins free. Installation is then complete. Warranty is void if other tools (or modified nut drivers) are used for installation.

Eye protection should be worn at all times when installing this product

SAMMY X-PRESS INSTALLATION

A. METAL DECK & PURLIN

1. Insert the bit receiver with 25/64" drill bit (p/n 8152910) into the chuck of a minimum 18-volt battery operated drill.
2. Drill the 25/64" hole through the metal deck or purlin at the desired location.
3. Slide the yellow sleeve of the X-Press It 2.0 Tool over the drill bit until it connects to the receiver.
4. With the internally-threaded portion of the anchor (XP 200, XP 20, XP 35, SWXP 35, SXP 20, SXP 35, SXP 2.0, SXP 3.5) positioned inside the socket of the installation tool, secure the square base of the Sammy X-Press within the square recessed guidelines of the installation tool.
5. Fully insert the Sammy X-Press anchor through the pre-drilled hole.
6. While keeping the top of the tool flush with the metal deck or purlin, firmly hold the yellow sleeve of the X-Press-It 2.0 Tool, before pulling the trigger to install the Sammy X-Press anchor. The expandable portion of the anchor will compress and secure the anchor to the metal deck or purlin. Be sure to properly position hand to avoid injury (see installation photos).

B. STRUCTURAL CONCRETE OVER METAL DECK

(Follow steps 1-6 before pouring concrete)

C. NON-STRUCTURAL LIGHTWEIGHT CONCRETE APPLIED OVER METAL DECK, NOT FOR USE WITH AIR DRY DENSITY GREATER THAN 35 PCF

(Follow steps 1-6 after the LWC has been applied)



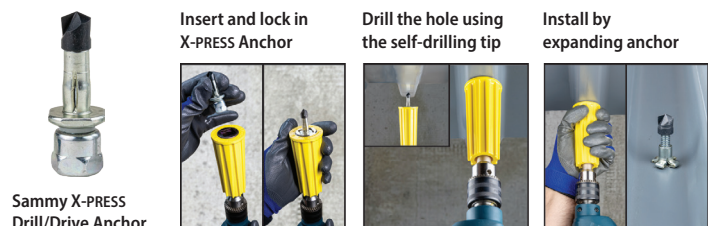
SAMMY X-PRESS DRILL/DRIVE INSTALLATION

A. METAL DECK & PURLIN

1. Insert the X-Press It 2.0 tool into the chuck of a minimum 18-volt battery operated drill. Please note, you will not be required to use the tool's internal drill bit when installing XPDD anchors.
2. With the internally-threaded portion of the anchor (XPDD 40) positioned inside the socket of the installation tool, secure the square base of the XPDD anchor within the square recessed guidelines of the installation tool.
3. Apply pressure to the drill-point of the XPDD anchor against the metal deck or purlin. Without holding onto the yellow handle, begin drilling into the metal deck or purlin until a hole is formed, allowing the anchor to completely pass through.
4. While keeping the top of the tool flush with the metal deck or purlin, firmly hold the yellow sleeve of the X-Press-It 2.0 Tool, before pulling the trigger to install the Sammy X-Press Drill/Drive anchor. The expandable portion of the anchor will compress and secure the anchor to the metal deck or purlin. Be sure to properly position hand to avoid injury (see installation photos).

B. STRUCTURAL CONCRETE OVER METAL DECK

(Follow steps 1-4 before pouring concrete)



Sammy X-PRESS Drill/Drive Anchor