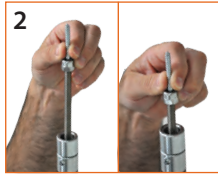


**SAMMYS POLE TOOL™ –
Installation Instructions**



Adjust the Pole Tool to length. The adjusting pin must be 18" below the base or the pin may interfere with the rod.



Load rod and Sammys into Pole Tool.



The socket will spin free when the screw is completely installed. Pull down to remove the Pole Tool.

PRODUCT FEATURES

- Speed your labor by 25%.
- Work from the ground up.
- No scaffolding, ladders, or lifts.
- Perfect for working in tight spaces, through ceiling grid, and high vaulted ceilings.
- Works with any Vertical SAMMYS: Wood, Steel or Concrete.



Part Number	Description	Box Qty
SP6	Speedy Pole 6'-18'	1