

SAMMY X-PRESS SWIVEL – Swivel Application



PRODUCT FEATURES

- The Sammy X-Press Swivel allows you to hang plumb in extreme roof pitches:
 - 89° in z-purlin
 - 45° in metal deck for 12/12 pitch
- Installs in seconds with Sammy X-Press It® Tool, saving time & installation costs.
- Use in applications where access to the back of the installed fastener is prohibited, ie. metal roof deck, tubular steel, or vapor barrier fabric.
- Less jobsite material needed.
- No retaining nut required.
- Provides design flexibility.
- Assembled in the U.S.A.



View our installation videos:
www.sammysanchors.com/install

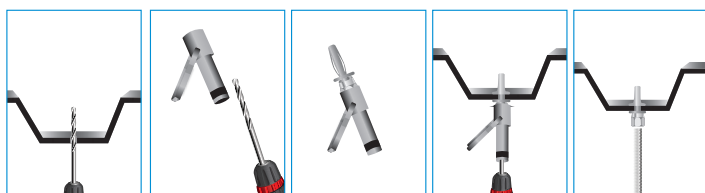


SWIVEL MOUNT

Approvals	Rod Size	Part Number	Model	Description	Ultimate Pullout (lbs)	UL Test Load (lbs)	UL Min Thick	FM Test Load (lbs)	FM Min Thick	Max. Thick	Box Qty	Case Qty	Application
	3/8"	8294922	SXP 20	Swivel X-Press 20	1061 (22 ga Vert) 829 (45° Off Vert)	750 (2" Pipe)	.029	635 (2" Pipe)	.029"	.125"	25	125	Metal Deck/Purlin
						170 Vertical (Luminaire) 80 @ 45° (Luminaire) 283 Vertical (Conduit & Cable) 233 @ 45° (Conduit & Cable)							
	3/8"	8295922	SXP 35	Swivel X-Press 35	1675 (16 ga Vert) 1558 (89° Off Vert)	1250 (3½" Pipe)	.059	635 (2" Pipe)	0.29"	.125"	25	125	Metal Deck/Purlin
						250 Vertical (Luminaire) 80 @ 90° (Luminaire) 500 Vertical (Conduit & Cable) 333 @ 89° (Conduit & Cable)							
†	1/2"	8272957	SXP 2.0	Swivel X-Press 2.0	1061 (22 ga Vert) 829 (45° Off Vert)					.125"	25	125	Metal Deck/Purlin
†	1/2"	8271957	SXP 3.5	Swivel X-Press 3.5	1675 (16 ga Vert) 1558 (89° Off Vert)					.125"	25	125	Metal Deck/Purlin

† Approved for Sway Bar Bracing Only

SAMMY X-PRESS IT® INSTALLATION TOOL – Application



PRODUCT FEATURES

- The Sammy X-Press expands to provide direct vertical attachment in:
 - metal deck (22-16 ga)
 - z-purlin (18-16 ga)
- Assembled in the U.S.A.



View our installation videos:
www.sammysanchors.com/install



SAMMY X-PRESS IT®

Part Number	Model	Description	Qty
8194910	UXPIT*	Universal X-Press It Tool	1
8152910	XPDB	25/64" Drill Bit	1

* Tool includes: Sleeve, Bit Receiver, Hex Wrench, and 25/64" Drill Bit

